



- 1 Korea Institute for Food Industry Cluster (main bldg.)
- 2 Food Packaging Center
- 3 Food Quality and Safety Center
- 4 Functional Food Evaluation Center
- 5 Pilot Plant
- 6 Food Venture Center
- 7 Sauce Business Center
- 8 HMR Technical Support Center
- 9 Functional Food Form Center(To be completed in 2022)
- 10 Youth Food Venture Center(To be completed in 2023)
- 11 Agri-Food Ingredient Supply Center(To be completed in 2021)
- 12 Functional Food Ingredients Bank (completed in 2023)



www.foodpolis.kr

Inquiries **1688-8782**

Korea Institute for Food Industry Cluster
(54576) 100, Gukgasikpum-ro, Wanggung-myeon, Iksan-si, Jeollabuk-do

The Mecca of Innovative Food Industry Development

The First Food Industry in Korea

Korea National Food Cluster

FOODPOLIS



With 11 supporting facilities,
we support **Food Business** with ingredient supply,
trial products, packaging, inspection, analysis,
manpower supply, and export.

Promising Korean Food Companies have Committed their Investment!

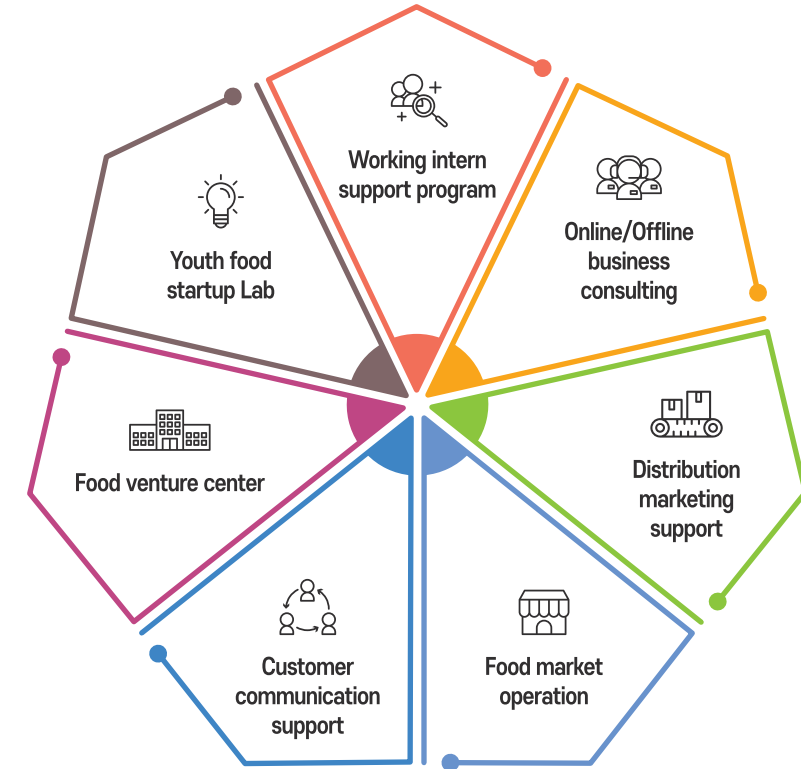
Occupied by approximately one hundred companies including Harim, Pulmuone, Neo-Cremar, FromBIO, Soonsoobon, Core Bio, etc.



Various incentives to ease the burden on businesses

No concerns about tax, with five years of tax exemption **Restriction of Special Taxation Act** applied
(Corporate tax exempted for 3 years, 50% reduced for 2 years)

Programs to promote and support businesses



※ Conditions above may vary

Financial and tax privileges

Type	Local investment promotion subsidy (National+local government)	Investment subsidy (Local)	Tax reduction	
			Corporate tax	Local tax
Resident companies	-	-	Three years exemption+ two years 50% reduction * Revision of Restriction of Special Taxation Act('19.11.26)	-
Moving from the capital area	Land investment 40% Facility investment 24%	10% of the amount exceeding one billion won (Jeollabuk-do)+(Iksan-si) 5% or less	Five years exemption+ two years 50% reduction	Acquisition tax(1 time)+ 100% reduction on property tax(5 years) 50% reduction for next 3 years
New establishment · expansion	Facility investment 24% * applicable until December 2020	-	Three years exemption+two years 50% reduction (Revision of Restriction of Special Taxation Act)	-
Investment incentives	Employment subsidy, education and training subsidies, employment settlement subsidies, etc.			

• Financial and tax benefits may differ by investment, size, and/or conditions
※ Revision of Restriction of Special Taxation Act(2019.11.26)

Technology Support Services to increase business competitiveness

Eleven supporting facilities



Korea Institute for Food Industry Cluster
Overall operation and management of Korea National Food Cluster



Food and Safety Center
Analysis and sensory tests on quality and nutritive components, consulting certified by HACCP



Pilot Plant
Manufacturing trial products(powder, liquid, capsules, drinks, etc.) and toll processing (retort, freeze dehydration, fermentations, etc.)



Food venture center
Leased factories to foster small and medium-sized food companies



**Agri-Food Ingredient Supply Center
(To be completed in 2021)**
Supports storage(cold/frozen/room temperature), procurements, and intermediates of ingredients



**Youth Food Venture Center
(To be completed in 2023)**
Supports venture facilities and provides startup programs



Functional Food Evaluation Center
Standardization/efficacy evaluation of functional ingredients(cells, animals) · tests on human body, consulting recognized by the Ministry of Food and Drug Safety



Food Packaging Center
Food packaging design/improvement/development and distribution environment Packaging safety analysis



Sauce Business Center
Making extract, concentrated trial products of sauce and supporting sauce recipes



**HMR Technology Support Center
(Established in 2020)**
Supports sterilization, freezing/thawing, packaging technology



**Functional Food Form Center
(To be completed in 2022)**
Develops and designs the optimal forms of functional food



Optimal position to advance into Korean and overseas markets

